

Realizzazione spogliatoi dell'impianto sportivo di via Fermi

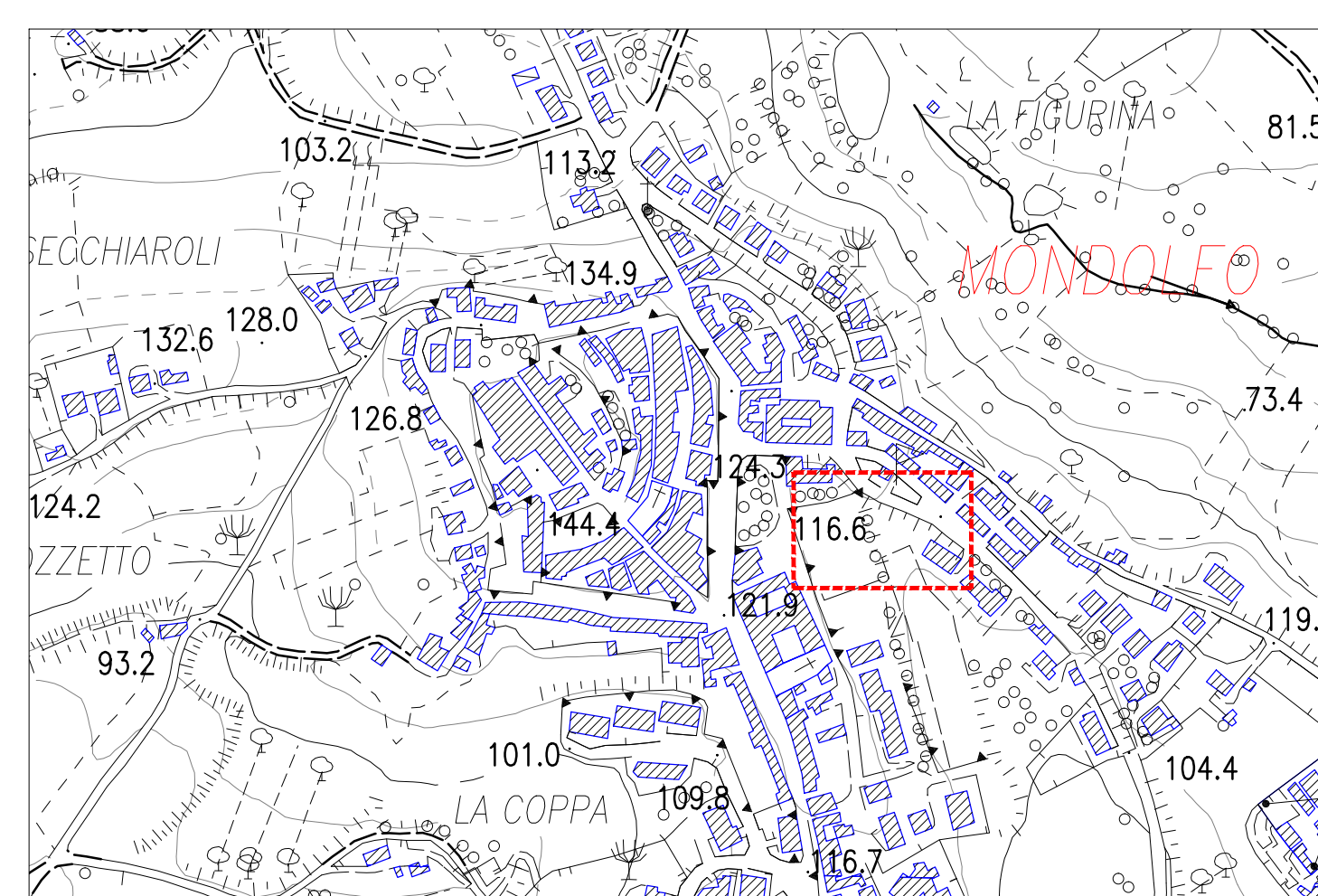
## Tavola Progettuale

Tavola : UNICA - PROPOSTA PROGETTUALE scala 1:100

PROGETTISTI

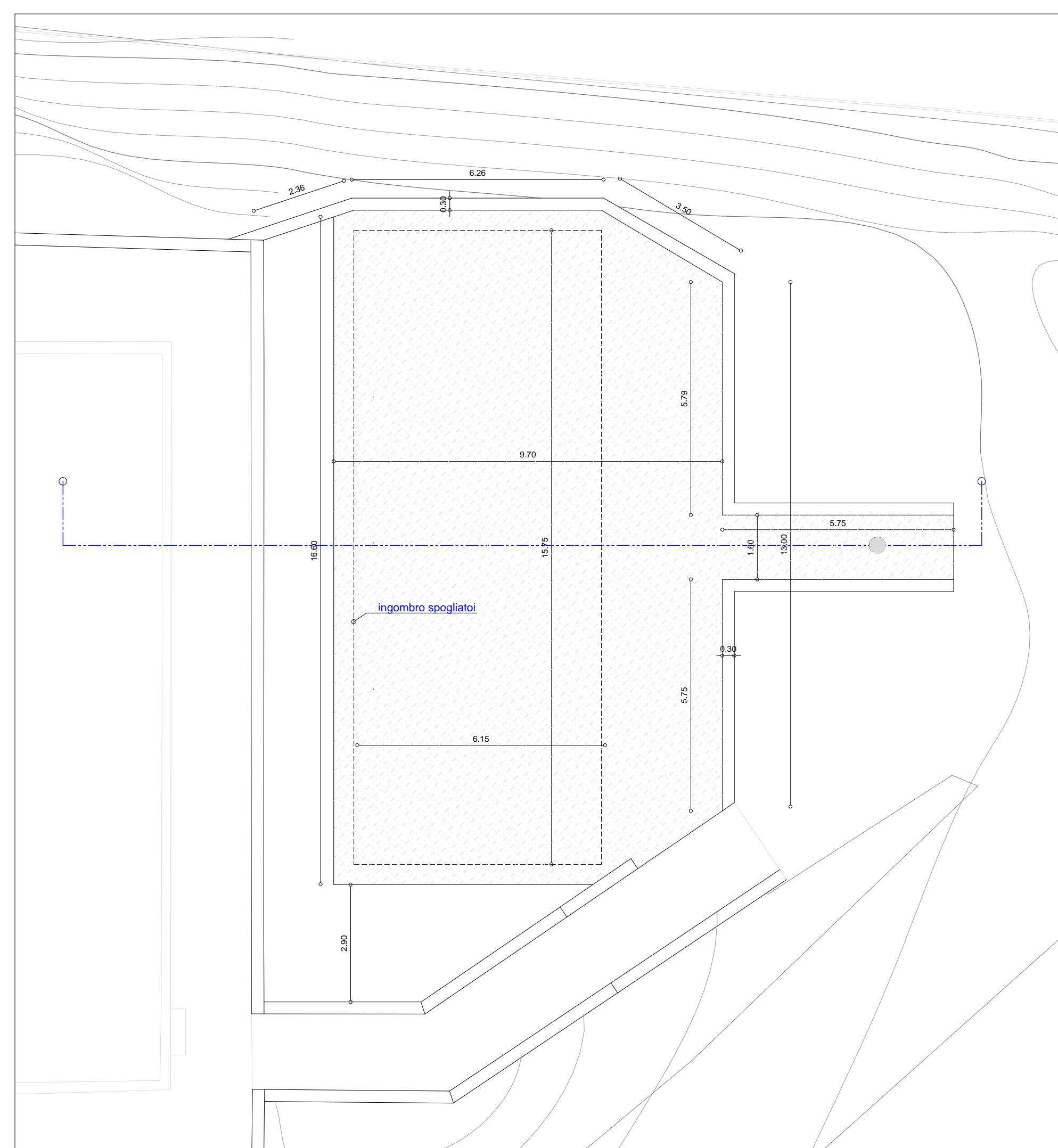
IL FUNZIONARIO RESPONSABILE  
DEL 5° SETTORE LL.PP. E AMBIENTE  
Arch. GIANFRANCO CENTOSCUDI

Mondolfo, 04 dicembre 2018

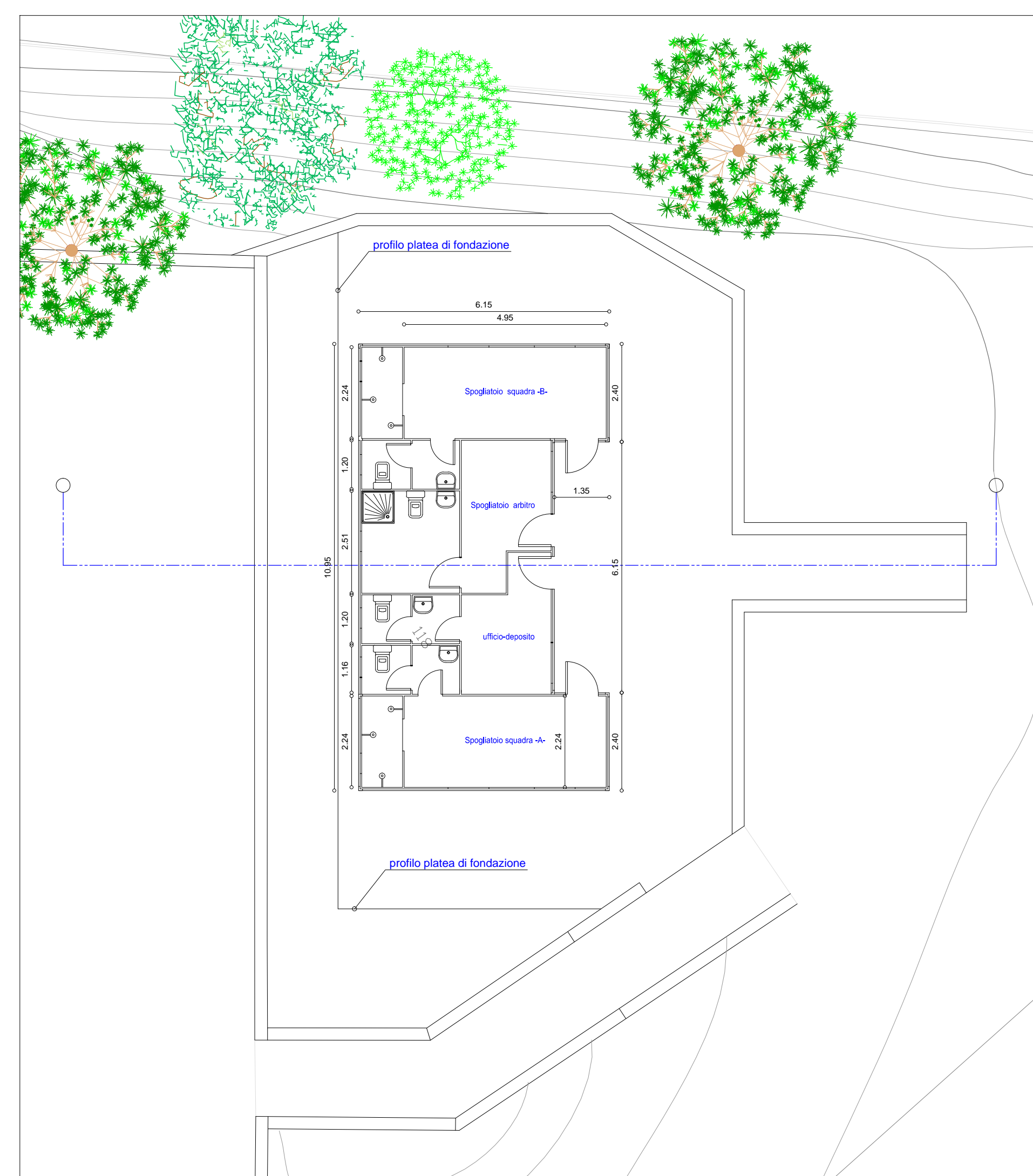


STRALCIO C.T.R. scala 1:5000

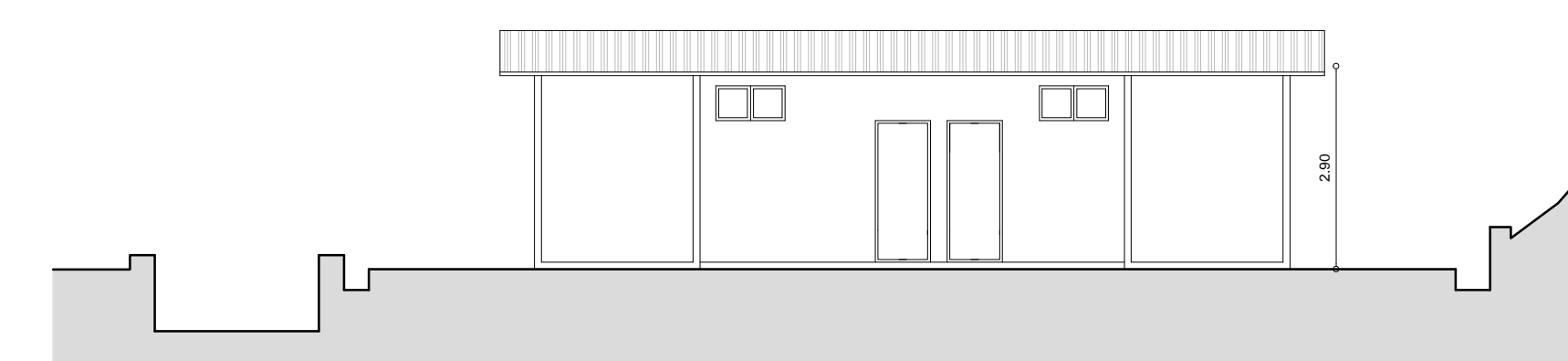
PLATEA DI FONDAZIONE REALIZZATA CON PRECEDENTE INTERVENTO



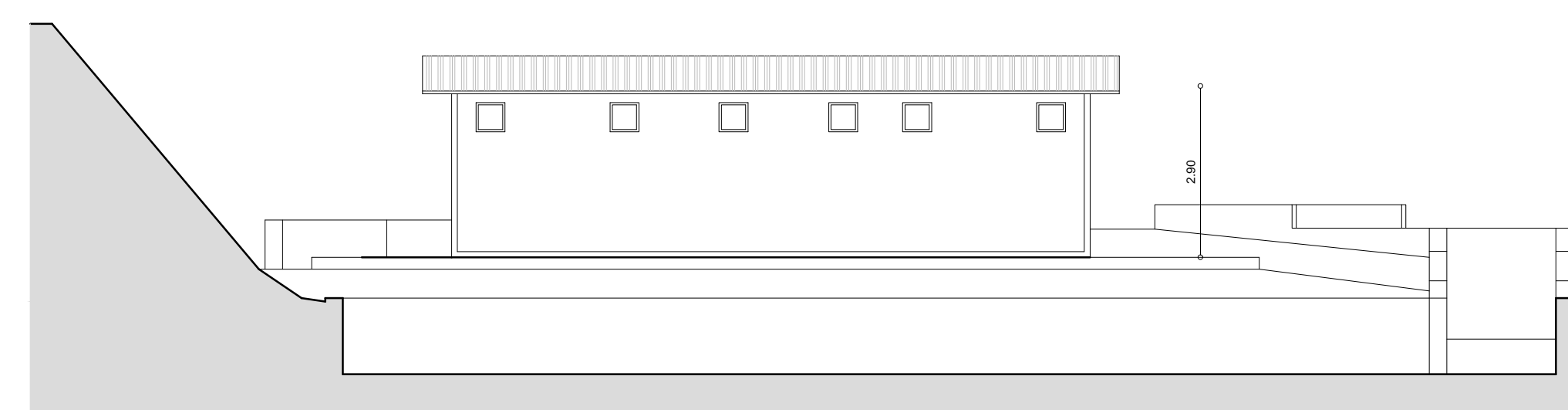
PIANTA SPOGLIATOI



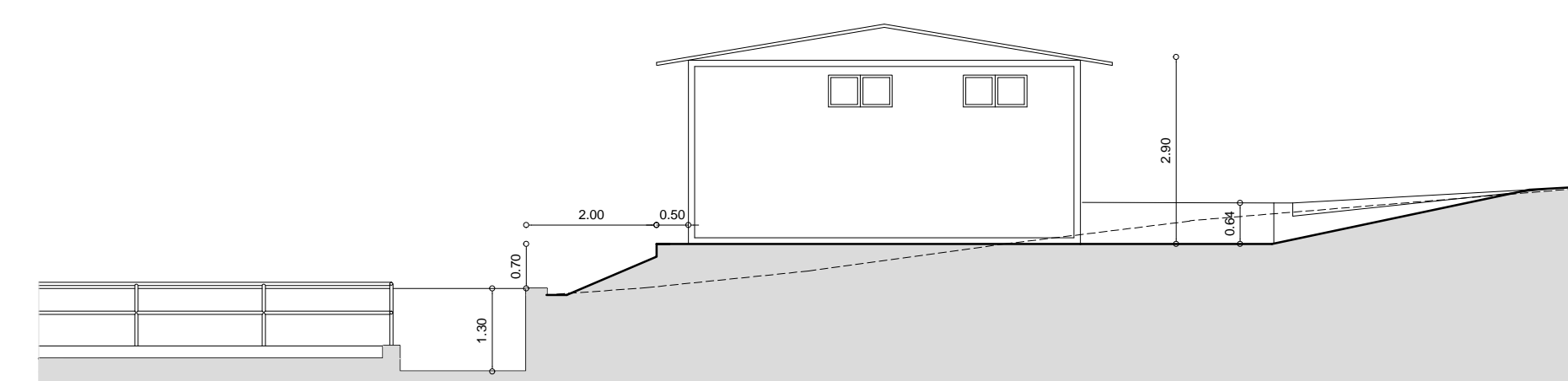
## PROSPETTO



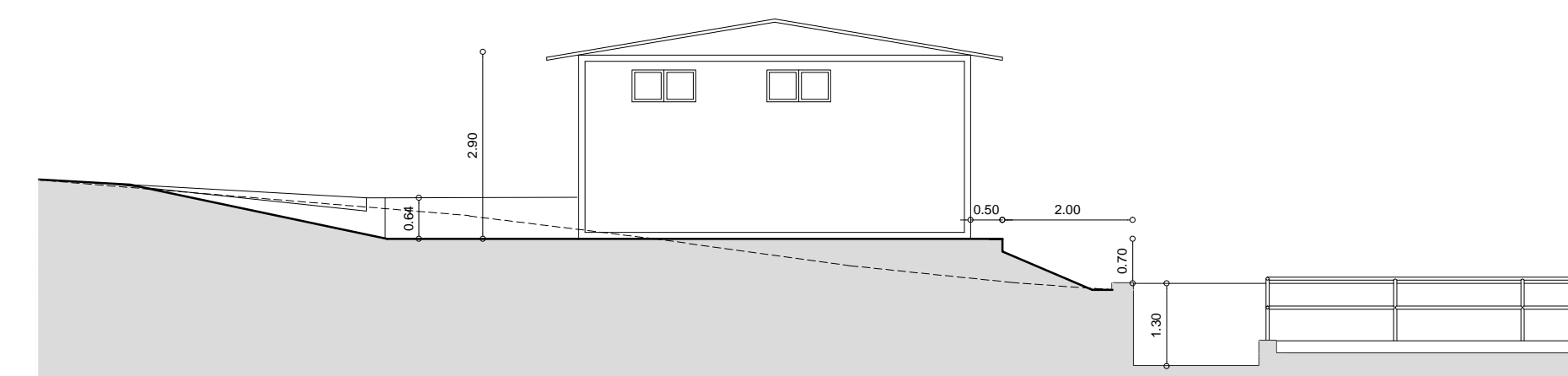
## RETRO PROSPETTO



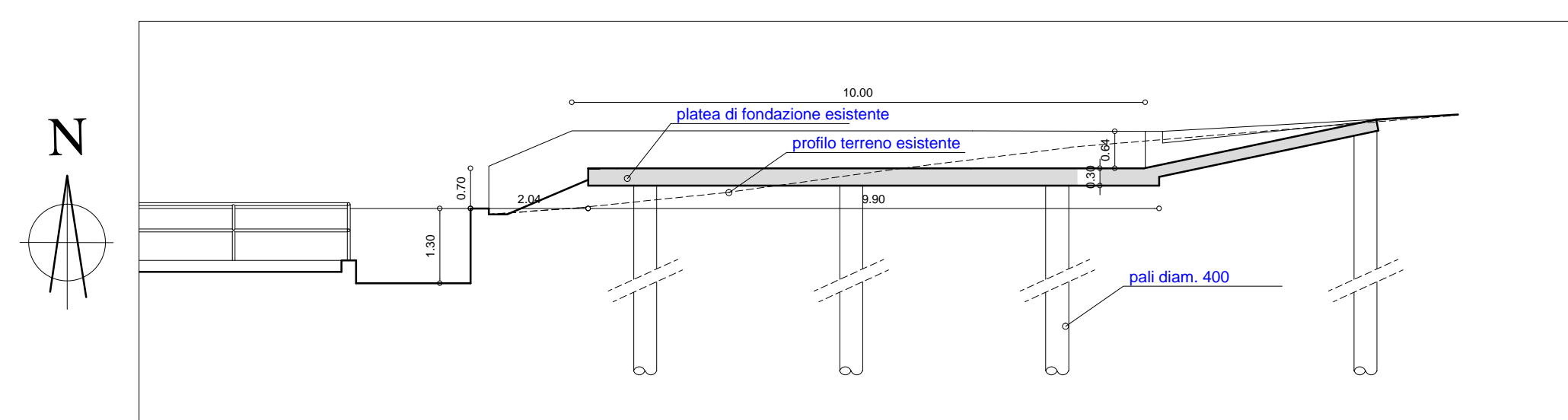
PROSPETTO SINISTRO



PROSPETTO DESTRO



SEZIONE PLATEA DI FONDAZIONE



SEZIONE

